

# NIKKISO

定量泵浦配件  
Accessories  
for Metering Pumps



NIKKISO EIKO CO., LTD.

## 背壓閥

背壓閥為隔膜式，能調整設定壓力。可在定量泵浦輸送時，建立穩定輸送壓力，輸送精確定量的藥液，並可防止虹吸。

### Back Pressure Valves

It is a diaphragm type back pressure valve. With adjustable setting pressure, it can keep metering pumps dosing accurately and be an anti-syphon.

型號 Model	尺寸 Size	材質 Material	壓力範圍 Pressure Range
15KB	15A	PVC PVDF SUS304 SUS316	1 - 3 Kgf/cm <sup>2</sup>
20KB	20A		
25KB	25A		
40KB	40A		
50KB	50A		



背壓閥 Back pressure valve

## 釋壓閥

泵浦若因堵塞或管路上的閥類未開啓等因素，會造成壓力昇高。當這個異常壓力達到隔膜式釋壓閥所設定的壓力時，液體會由此閥回流，以達到保護泵浦及管路的目的是。

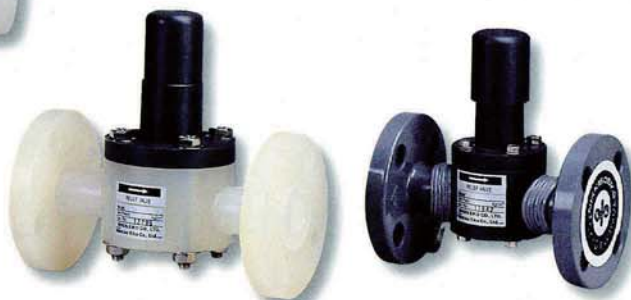
### Relief Valve

It is to protect pumps from inadmissible excessive pressure. If the liquid reaches the preload pressure of the relief valve, the liquid flows through it to prevent pumps and pipes from damaged.

型號 Model	尺寸 Size	材質 Material	壓力範圍 Pressure Range
15KR	15A	PVC PVDF SUS304 SUS316	3 - 10 Kgf/cm <sup>2</sup>
20KR	20A		
25KR	25A		
40KR	40A		
50KR	50A		



釋壓閥 Relief valve



**脈動緩衝器**

消除脈動。利用緩衝器內之空氣壓縮，使輸送之藥液穩定輸送。減少管路的振動，及降低往復動作產生之管路內部阻抗。

**Air Chamber**

It serves to avoid flow pulsation, and decreases inertial resistance of pipe for oscillating positive displacement pumps.

容量 (L) Capacity	材質 Material	工作壓力 (Max.) Working Pressure
0.5, 1, 2.5	PVDF	5 Kgf/cm <sup>2</sup>
0.5, 1, 2.5, 6, 15	PVC	
0.5, 1, 2.5, 4, 6, 10, 15	SUS304 SUS316	9 Kgf/cm <sup>2</sup>



脈動緩衝器 Air chamber

**校正管**

在泵浦運轉時，可校正及標定定量泵浦之輸送量。

**Calibration Pot**

It can help to determine the dosing capacity of the pump which is in working conditions.

容量 Volume(L)	材質 Material	工作壓力 (Max.) Working Pressure
0.5, 1, 2, 6	透明 PVC Transparent PVC	5 Kgf/cm <sup>2</sup>



校正管 calibration pot

**流量檢視器**

檢視密閉的管路是否有輸送液輸出。

**Flow Checker**

It is to detect whether the liquid is discharged normally or not.

尺寸 Size	材質 Material	工作壓力 (Max.) Working Pressure
15A, 20A, 40A	透明 PVC Transparent PVC	5 Kgf/cm <sup>2</sup>

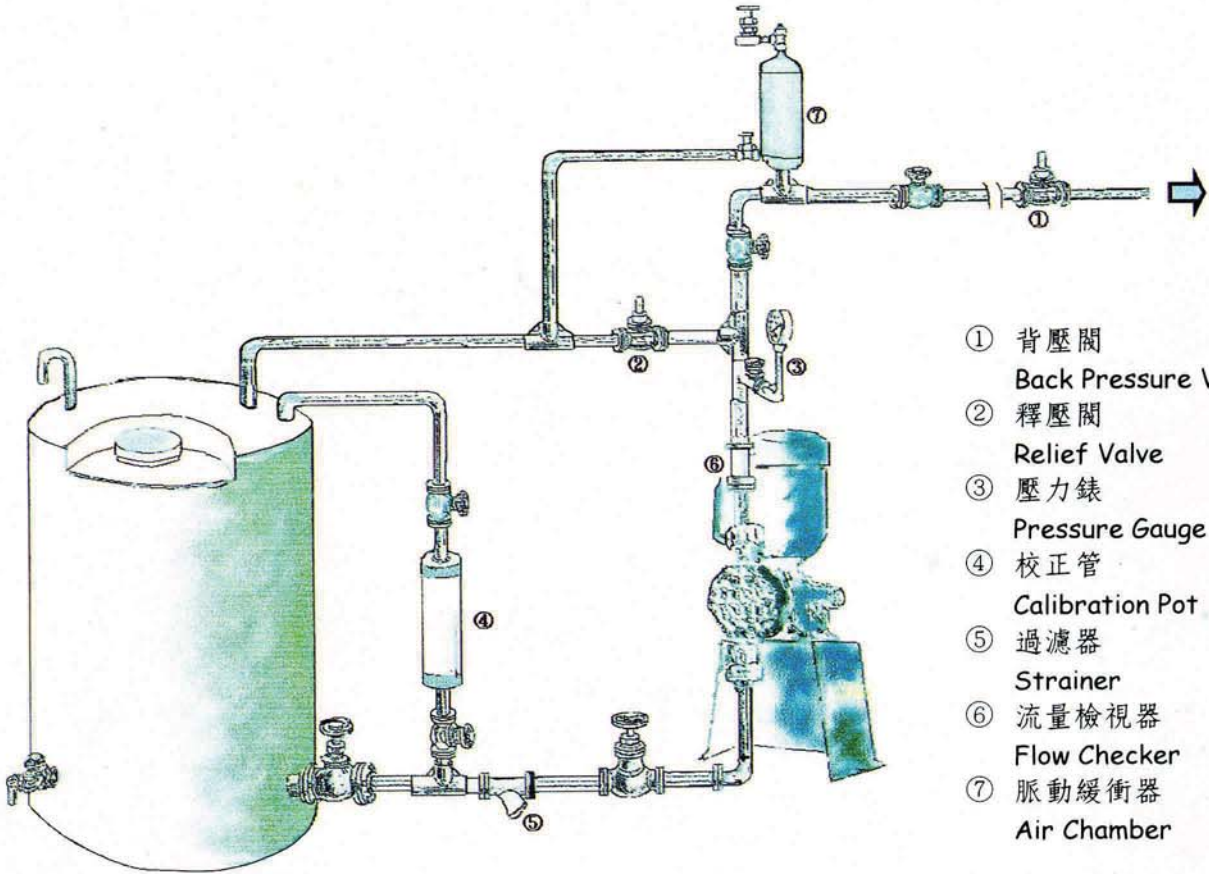


流量檢視器 Flow checker



# 定量泵浦選配件按裝位置

## Accessories For Metering Pumps Mounting and Installation



- ① 背壓閥  
Back Pressure Valve
- ② 釋壓閥  
Relief Valve
- ③ 壓力錶  
Pressure Gauge
- ④ 校正管  
Calibration Pot
- ⑤ 過濾器  
Strainer
- ⑥ 流量檢視器  
Flow Checker
- ⑦ 脈動緩衝器  
Air Chamber

### SHUN EIKO CO., LTD.

NO. 11, KUNG ERH RD., LIN KOU HSIANG,  
TAIPEI HSIEN, TAIWAN, R.O.C.  
TEL: 886-2-26015831 FAX: 886-2-26010230

Licensed by

### NIKKISO EIKO CO., LTD.

16-2, NOGUCHICHO 2-CHOME, HIGASHI-MURAYAMA CITY,  
TOKYO 189-0022, JAPAN  
TEL: 81-42-390-6540 FAX: 81-42-390-6541