

# JEC - Always a Step Ahead

JRZS SERIES TWIN SCREW PUMPS



**JEC**  
P U M P S

A VERDER COMPANY

# 3IP

High Pride  
Higher Performance  
The Highest Quality



JEC Ltd. specializes in the field of sanitary pumps.

JEC was established in 1990 and started producing sanitary pumps utilizing precision cast and pressed parts for the first time in Korea. Since then JEC has been successfully supplying to the process industries centrifugal, rotary and self-priming pumps, as well as blenders. JEC pumps are now renowned for reliability both for general duties and special applications. JEC's success is built upon high quality manufacture and customer satisfaction. Our policy is one of long term vendor partnerships.

Good relations with our customers are prerequisite to our growth.

JEC considers exchanging ideas their customers of the highest importance.

It is our belief JEC fully supports to meet customers' expectations and contributes towards their prosperity.

We are always striving to make every effort to start new initiatives.

The JEC philosophy is one of continuous improvement and keeping promises.





## Our pride is created by high quality!

Thanks to our extensively accumulated long-term experience for hygienic pumping solutions, the JRZS series of Twin-Screw Pumps was newly developed with very unique “One piece with large radius corner screw case” design, very compact “Front loaded self-balanced mechanical sealing system” and “Fully drainable front cover” and “Integral geared adaptor with B5, 4pole motor directly coupled. It is the only one in field of the “Twin Screw Pumps”!

The JRZS series was designed for reliable pumping from low to high viscous, volatile or gaseous products and applications to fulfill the utmost hygienic and efficiency requirement produced according to the highest hygienic specifications such as EHEDG & 3-A certified manufacturing processes.



# JRZS series Twin Screw Pumps

JEC - Always a Step Ahead

- Pioneer for the first design of “One piece twin screw case”, “Large radius corner case to reduce the dead Space for smooth flow” and “Compact front loaded self-balanced mechanical seal system”.
- Pumping widest range of viscosity and providing flexibility for various conditions at the best operating.
- High speed range (up to 3,000rpm) of revolution ensures “2-in-1” operation for both products and CIP.
- Pulsation free for gentle treatment and High suction performance for higher capacity.
- 3-A & EHEDG certified and elastomers with FDA & EC1935/2004 complied.
- Integral geared adaptor can be coupled with B5, 4pole motor directly.
- Diverse shaft sealing system for Unique, Compact & Simple construction
- Wetted parts for Stainless steel 316L and surface for Ra < 0.8 $\mu$ m .
- Simple & easy maintenance with low service cost.
- Fully drainable front cover.

## SPECIFICATIONS

- Modular system interchangeable with qualified rotary lobe pumps.
- Good interchangeability of diverse shaft sealing systems.
- Two different screw pitches for optimized applications.
- Double Angular ball bearing, good for high speed.
- All type of ports available.
- Surface-hardened screws and screw case optional.
- Heating jacket on the screw case optional.

## APPLICATION

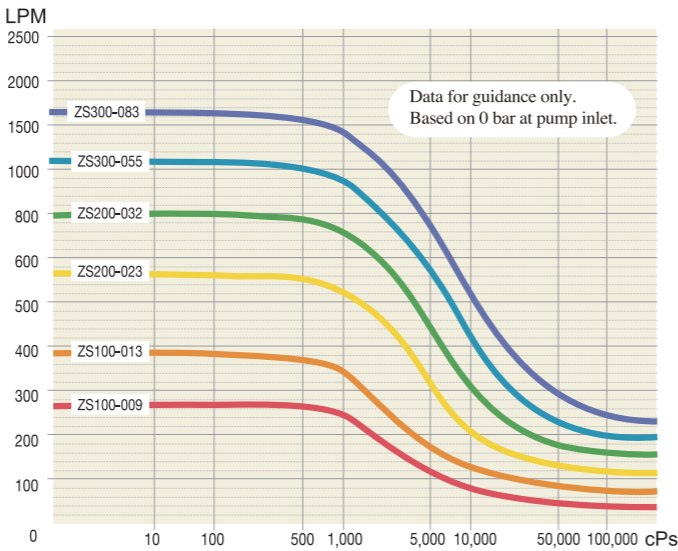
- JRZS series pumps have been designed to be conveyed with all hygienic pumping applications found in the food, dairy, beverage, cosmetics, pharmaceutical and chemical industries.

## TECHNICAL DATA

ZS Series	Model No.	Screw Pitch	Displacement			Connection size(optional)		Max. Differential pressure		Max. Speed
		mm	Liters/rev	Int Gal/100rev	US Gal/100rev	mm	Inches	Bar	PSI	Rev/min
100	ZS100-009-12	22	0.09	1.98	2.38	63 x 50	2.5" x 2"	12	174	3,000
	ZS100-013-08	34	0.13	2.86	3.43	50 x 38	2" x 1.5"	8	116	3,000
200	ZS200-023-12	30	0.23	5.06	6.08	76 x 63	3" x 2.5"	12	174	2,500
	ZS200-032-08	45	0.32	7.04	8.45	63 x 50	2.5" x 2"	8	116	2,500
300	ZS300-055-12	40	0.55	12.10	14.53	100 x 76	4" x 3"	12	174	2,000
	ZS300-083-08	60	0.83	18.26	21.93	76 x 63	3" x 2.5"	8	116	2,000

- Widest range, from aqueous to the high viscous media can be treated with low shear up to 1,000,000cPs, 3,000rpm for CIP operation, 16bar for Maximum differential pressure.

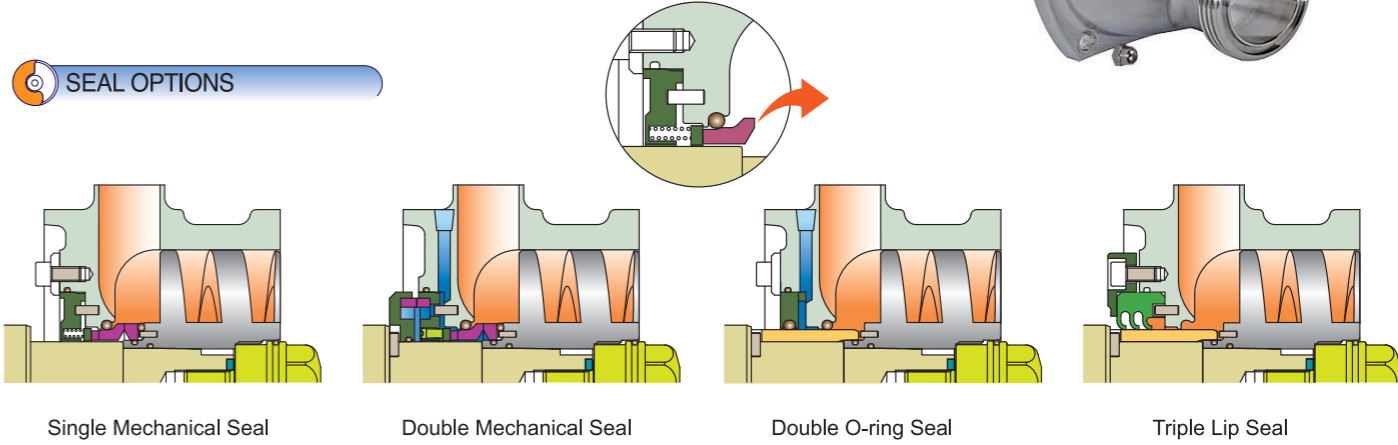
## PERFORMANCE CURVE



“The higher the precision the longer the span of product life”



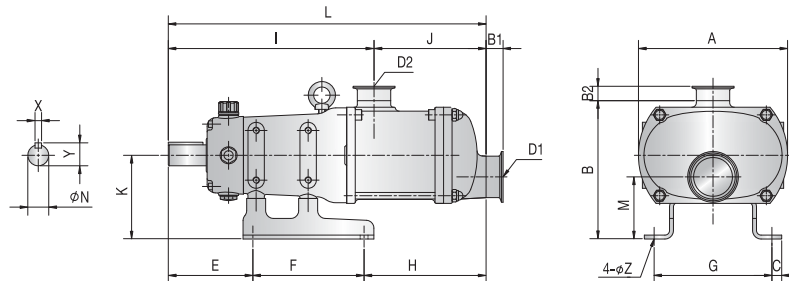
## SEAL OPTIONS



Our pride is created by high quality!  
JEC Sanitary Pumps



*"The reliable choice for your process"*

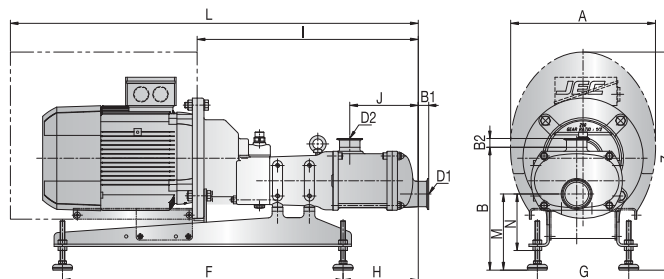


#### ■ OUTLINE DIMENSION

Model NO.	Dimension												
	A	B	C	E	F	G	H	K	L	N	X	Y	Z
JRZS100	115	168	12	96	124	134	141	101	360	22	8	25	9
JRZS200	228	212	15	129	170	180	186	128	486	32	10	35	11
JRZS300	315	297	21	158	215	242	245	181	618	45	14	49	13

#### ■ PORT SIZE & WEIGHT

Model NO.	Ports D1 x D2	I	J	M	Dimension B1 x B2						Weight	Volume
	Optional				Clamp	IDF	BS	DIN	SMS	FLANGE	KG	CBM
JRZS100	2.5" x 2"	240	121	82	26 x 22	26 x 27	26 x 26	37 x 30	26 x 22	35 x 30	22	0.01
	2" x 1.5"	234	127	76	22 x 22	27 x 25	26 x 26	30 x 30	22 x 20	30 x 30	22	0.01
JRZS200	3" x 2.5"	320	165	102	28 x 26	28 x 26	26 x 26	42 x 37	28 x 26	40 x 35	48	0.03
	2.5" x 2"	314	171	95	26 x 22	26 x 27	26 x 26	37 x 30	26 x 22	35 x 30	48	0.03
JRZS300	4" x 3"	402	216	142	28 x 28	28 x 28	26 x 26	45 x 42	35 x 28	54 x 40	103	0.06
	3" x 2.5"	395	222	129	28 x 26	28 x 26	26 x 26	42 x 37	28 x 26	40 x 35	103	0.06



Model	Motor/kw	Port(D1D2)	A	B	F	G	H	I	J	L	M±20	N	Z	Dimension B1xB2					
														CLAMP	IDF	BS	DIN	SMS	FLANGE
JRZS100	3.7KW	2.5" x 2"	292	272	500	196	139	420	121	790	186	129	482	26x22	26x27	26x26	37x30	26x22	35x30
		2" x 1.5"							127	880	180	123	512	22x20	27x25	26x26	30x30	22x20	30x30
	5.5/7.5KW	2.5" x 2"							121	880	186	129	512	26x22	26x27	26x26	37x30	26x22	35x30
		2" x 1.5"							127	880	180	123	512	22x20	27x25	26x26	30x30	22x20	30x30
JRZS200	5.5/7.5KW	3" x 2.5"	362	307	700	228	188	552	165	1018	197	148	544	28x26	28x26	26x26	42x37	28x26	40x35
		2.5" x 2"							171	1018	190	141	544	26x22	26x27	26x26	37x30	26x22	35x30
	11/15/18.5KW	3" x 2.5"	412	307	700	228	188	552	165	1118	197	148	581	28x26	28x26	26x26	42x37	28x26	40x35
		2.5" x 2"							171	1118	190	141	581	26x22	26x27	26x26	37x30	26x22	35x30
JRZS300	11/15/18.5KW	4" x 3"	412	398	830	270	262	714	216	1252	243	173	714	28x28	28x28	26x26	45x42	35x28	54x40
		3" x 2.5"							222	1252	230	160	714	28x26	28x26	26x26	42x37	28x26	40x35
	22KW	4" x 3"	472	398	830	270	262	714	216	1343	243	173	661	28x28	28x28	26x26	45x42	35x28	54x40
		3" x 2.5"							222	1343	230	160	661	28x26	28x26	26x26	42x37	28x26	40x35



**JEC**  
P U M P S

**A VERDER COMPANY**

15-26, Beodeul-ro 1362, Paltan-myun, Hwaseong-si, Gyeonggi-do, 18578, Rep. of Korea  
Tel:+82-31-355-0316, Fax:+82-31-355-0319, www.jecpump.com, E-mail:jec@jecpump.com