

## PACKO

### Wine pump ZW



#### Description

ZW series are specially designed for wine making process in order to provide the top quality wine and the best efficiency for wine maker. Since Rotors of ZW series are made of rubber, pumps are safe from galling by grape skins, seeds and stems.

Heli-lobe rotors are standard, optionally bi-lobe. Optional stainless steel gear box made from precision casting offers paint free, rust free and long last durability and therefore yields high lifetime value.

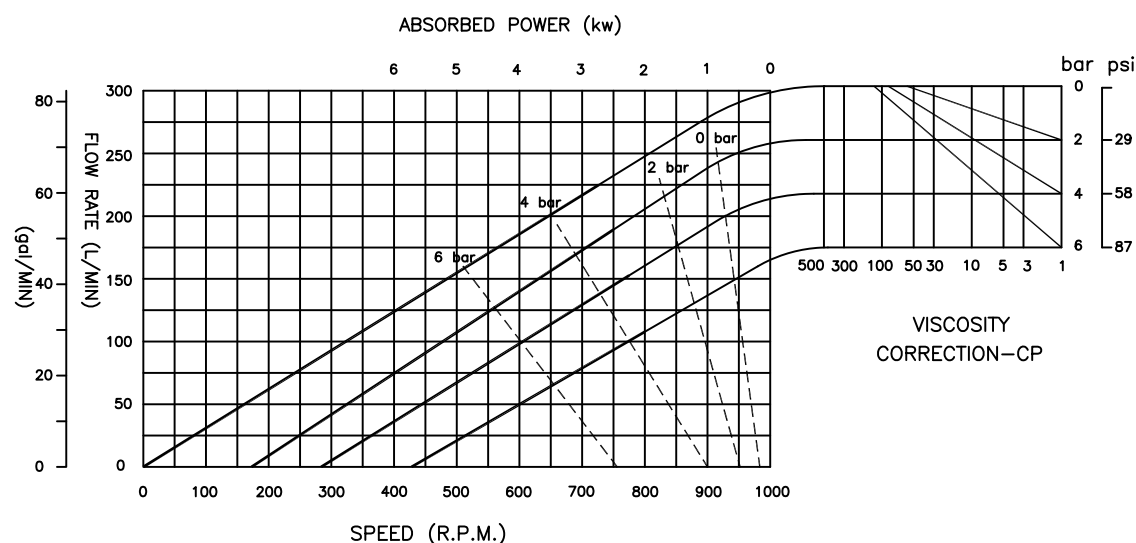
#### Your benefits

- Rotors made of rubber. They prevent blockages caused by grape skins, seeds or stems
- Pulsation-free heli-lobe rotor
- Gentle andling of shear-sensitive media
- Simple, maintenance free construction
- Optionally with seals accessible from the front

#### Technical details

|                     |                                       |                   |                             |
|---------------------|---------------------------------------|-------------------|-----------------------------|
| Max. flow           | 250 l/min                             | Max. viscosity    | 100.000 mPas                |
| Max. pressure       | 6 bar                                 | Temperature range | -5 bis up to 120 °C         |
| Max. rotation speed | 1000 rpm                              | Surface finish    | Ra 0,6 µm                   |
| Connections         | DIN, ISO, Tri-Clamp, SMS, RJT, Flange | Certificats       | 3A, FDA, EC 1935/2004, ATEX |

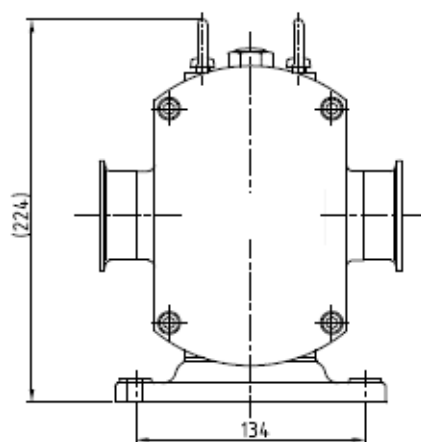
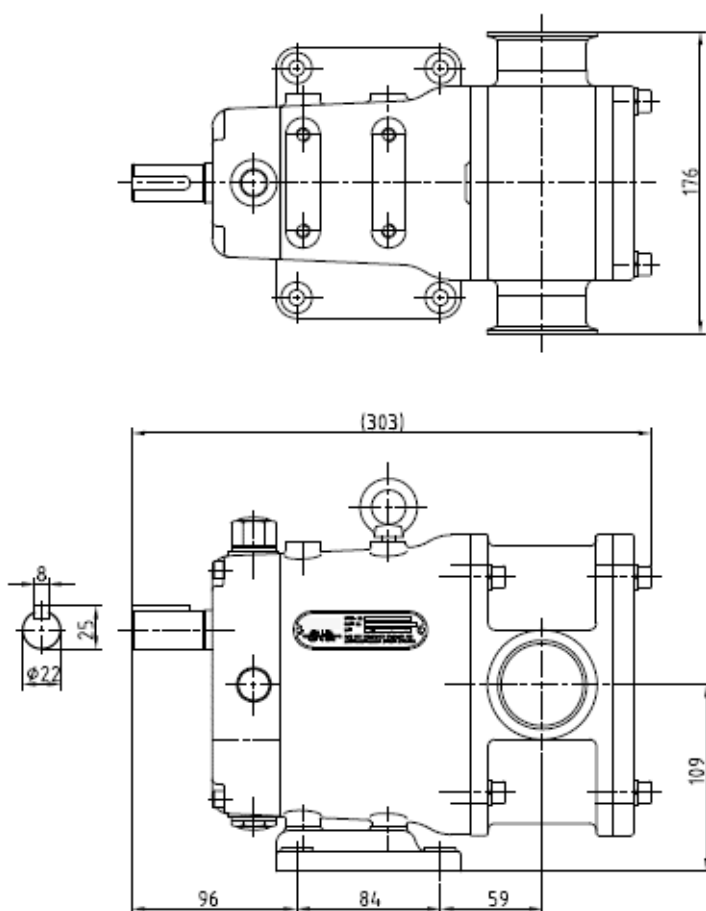
#### Curve



# PACKO

Wine pump ZW

## Dimensions



All dimensions in mm (dimensions are approx. values)

